



**EUROPEAN COMMISSION  
DG RESEARCH**



**SIXTH FRAMEWORK PROGRAMME  
Sustainable Surface Transport**

## **Sustainable Pavements for European New Member States**



### **ANNEX A: TEST SECTIONS INSTRUMENTATION** **Deliverable D.12: Recommendations for traffic equivalency factors**

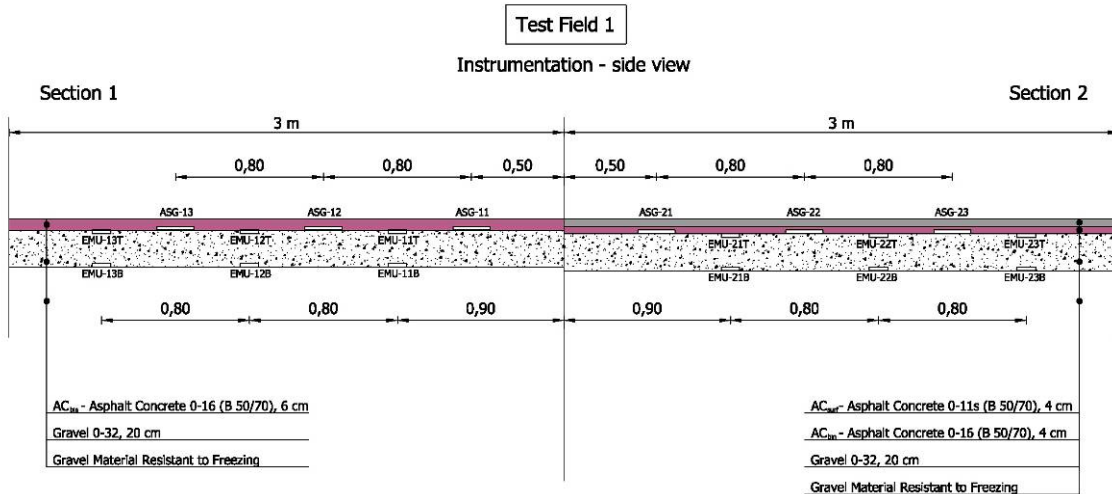
Deliverable no.	D12
Dissemination level	Public
Work Package	WP2 Task 2.1 Investigation of the Traffic equivalency factors
Main author(s)	Darko Kokot (ZAG), László Gáspár (KTI)
Co-author(s)	Przemyslaw Harasim (IBDiM), Zsolt Bencze (KTI), László Ézsiás (KTI)
Status (F: final, D: draft)	Final
File Name	SPENS-02-D12_TrafficEquivalencyFactors_Final
Project Contract No.	Contract No. 031467 (STREP, Priority 1.6.2)
Project Start Date and Duration	01 September 2006, 36 months

## FIGURES

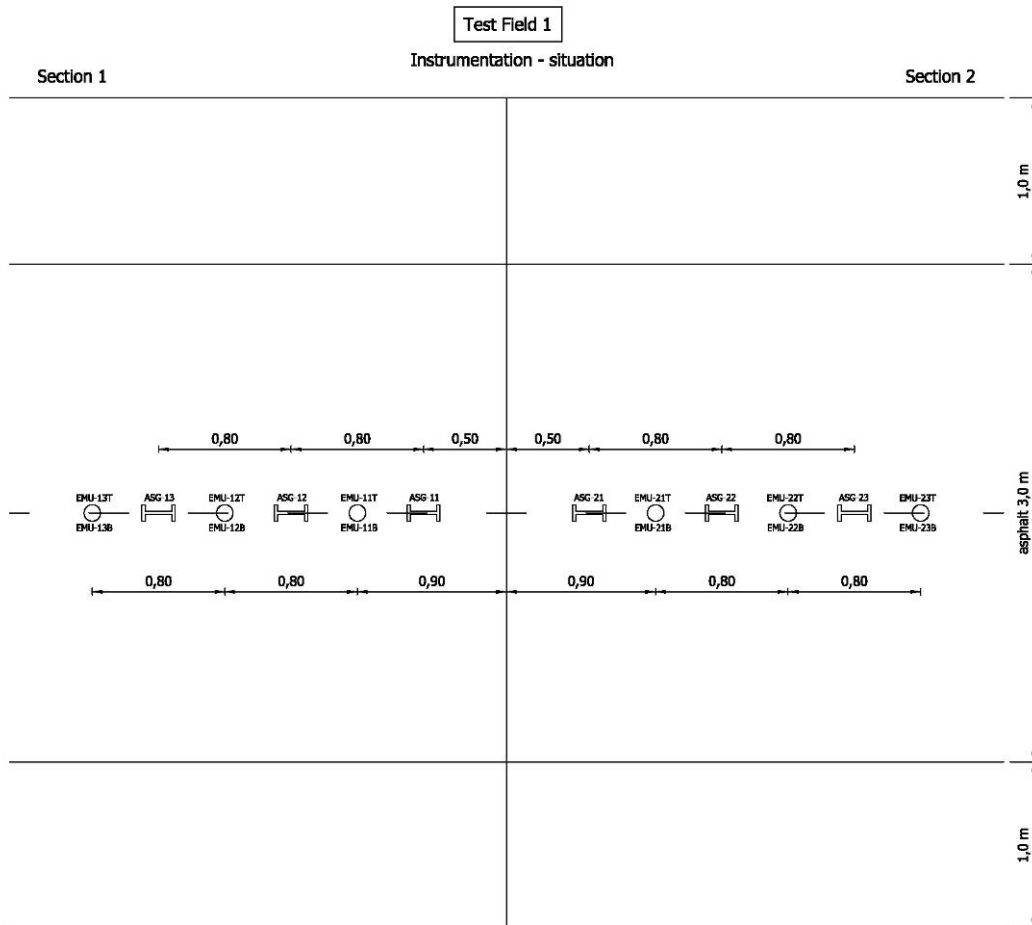
Figure 1 Instrumentation in test sections 1 and 2 – side view .....	1
Figure 2 Instrumentation in test sections 1 and 2 – top view .....	1
Figure 3 Instrumentation in test sections 3 and 4 – side view .....	2
Figure 4 Instrumentation in test sections 3 and 4 – top view .....	2
Figure 5 Instrumentation in test sections 5 and 6 – side view .....	3
Figure 6 Instrumentation in test sections 5 and 6 – top view .....	3
Figure 7 Test sections set up.....	4

## ABBREVIATIONS

ASG	Horizontal stress-strain gauge, H-shaped, Dynatest, placed in asphalt layer (Test Sections 1-6)
EMU	Inductive coils, vertical strain, home made, placed in unbound layer (Test Sections 1-4)
HAG	Horizontal stress-strain gauge, H-shaped, home made, placed in asphalt layer (Test Sections 5, 6)
LVDT	Linear variable differential transformer, vertical strain, TT-5-K-1, $\pm 5$ mm, h/d=150/200(80) mm, placed in unbound layer (Test Sections 5, 6)
MCS	Moisture content sensor, placed in unbound layer (Test Section 6)
RSG	Reinforcement stress-strain gauge, glued on steel mesh (Test Section 6)
SPG	Soil pressure gauge, Tokyo Sokki Kenkyujo KDA-PA, 1 MPa, d/h=200/26 mm, placed in unbound layer (Test Sections 5, 6)
TS	Temperature sensor, placed in unbound layer, asphalt layer and at the surface (Test Sections 1-6)
VAG	Vertical stress-strain gauge, placed in asphalt layer (Test Sections 5, 6), h/d=30/30 cm



**Figure 1 Instrumentation in test sections 1 and 2 – side view**



**Figure 2 Instrumentation in test sections 1 and 2 – top view**

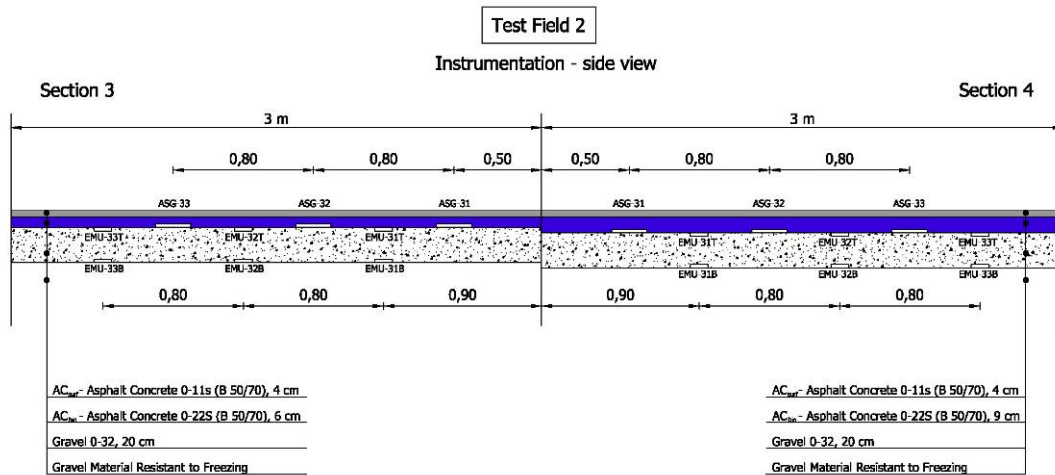


Figure 3 Instrumentation in test sections 3 and 4 – side view

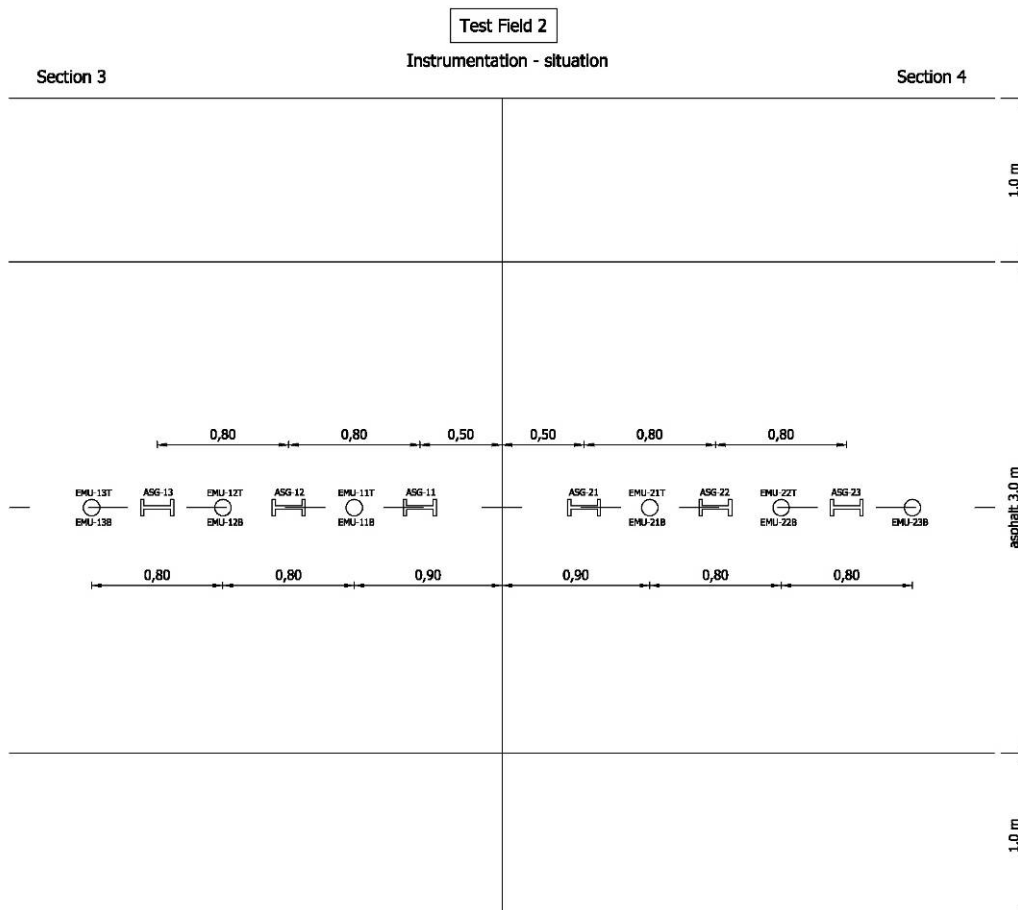


Figure 4 Instrumentation in test sections 3 and 4 – top view

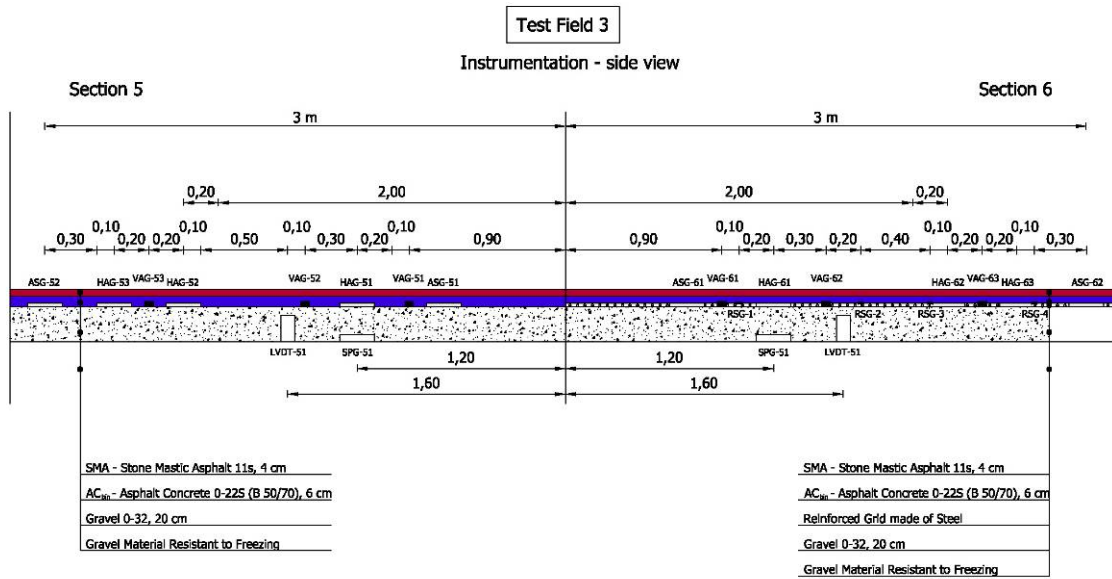


Figure 5 Instrumentation in test sections 5 and 6 – side view

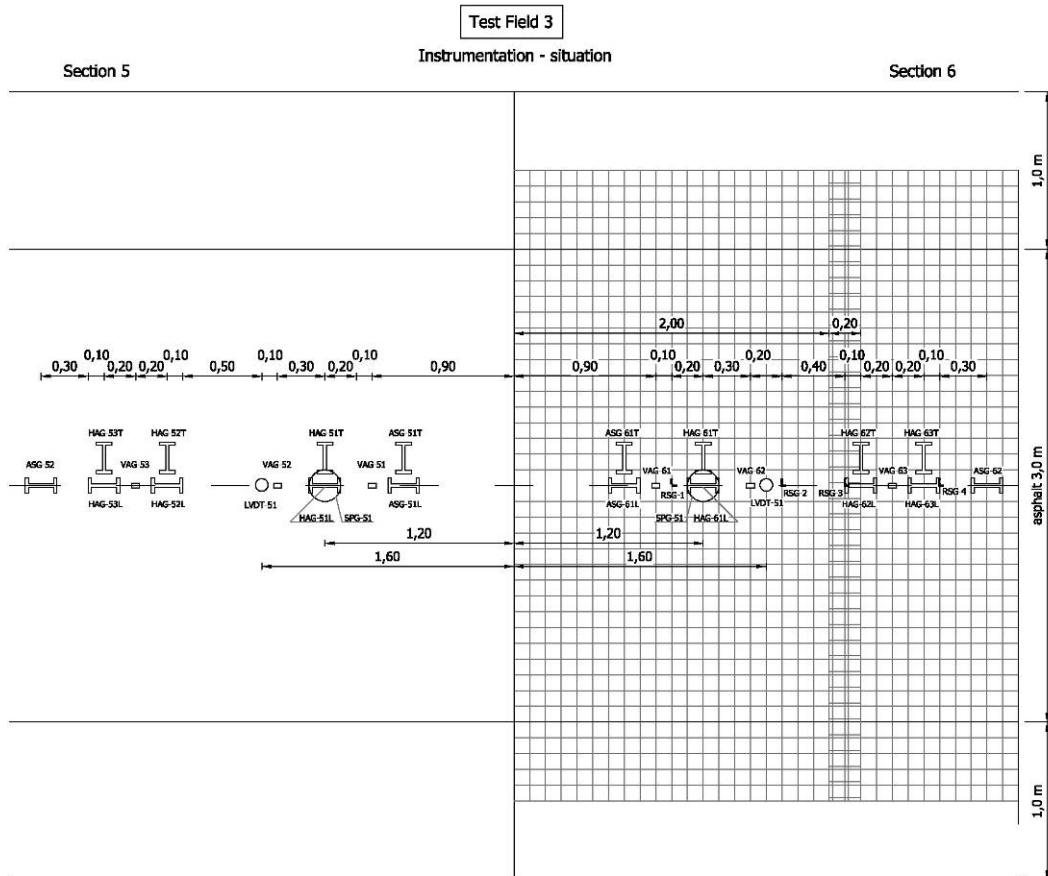


Figure 6 Instrumentation in test sections 5 and 6 – top view

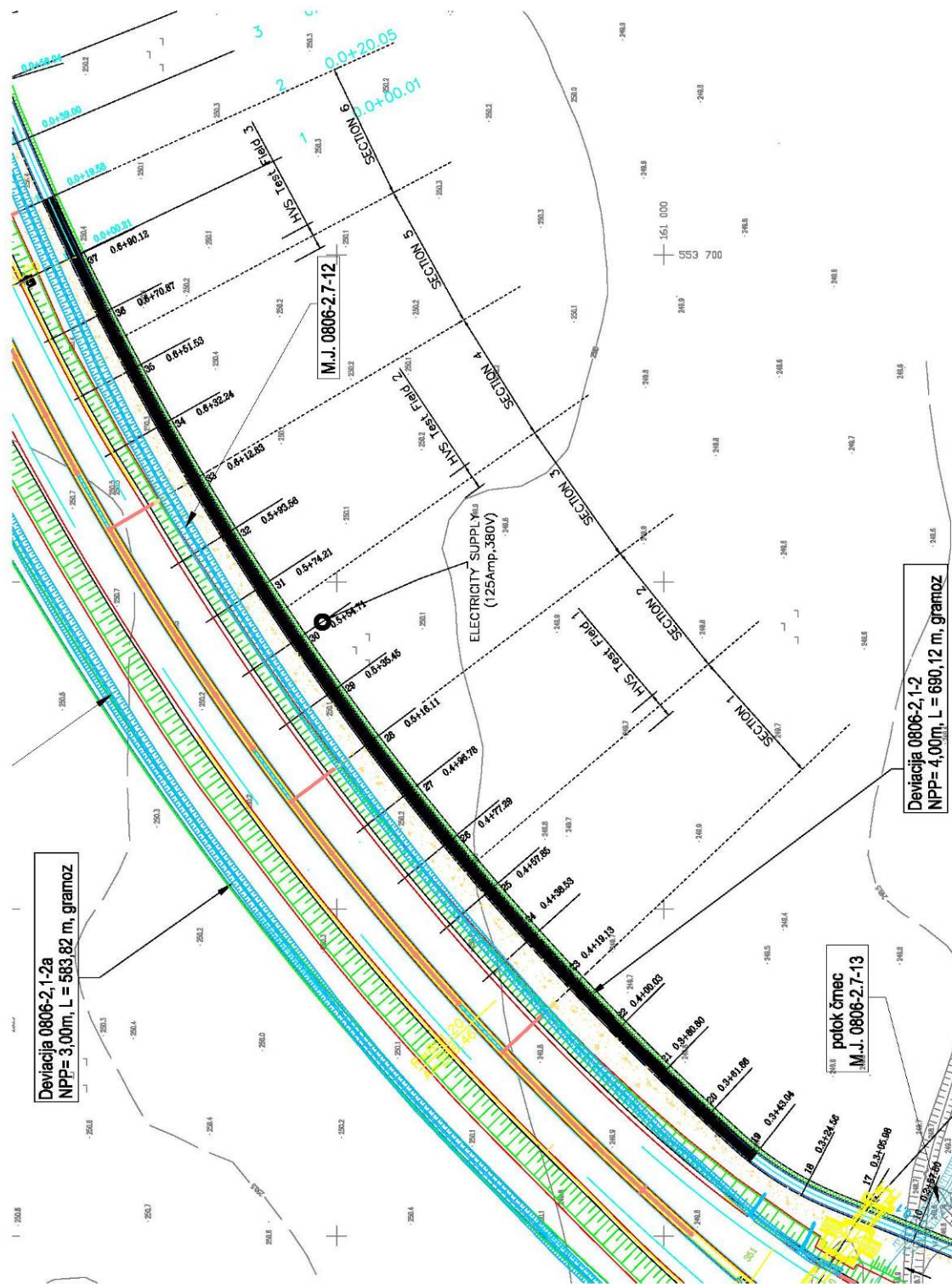


Figure 7 Test sections set up